

WILLOUGHBY PLAT NO. 1

BEING A TRACT OF LAND LYING IN THE HANSON GRANT SITUATED IN MARTIN COUNTY, FLORIDA.

I, MARSHA STILLER, CLERK OF THE CIRCUIT COURT OF MARTIN COUNTY, FLORIDA, HEREBY CERTIFY THAT THIS PLAT WAS FILED FOR RECORD IN PLAT BOOK 11, PAGE 58, MARTIN COUNTY, FLORIDA, PUBLIC RECORDS, THIS DAY OF _____, 1988.

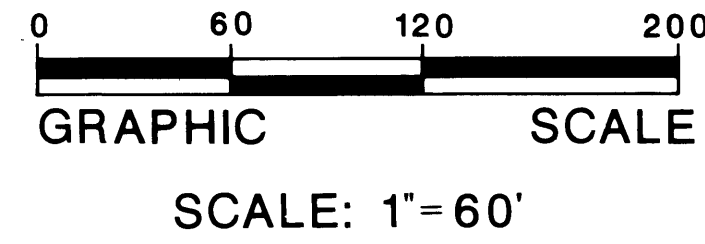
MARSHA STILLER, CLERK
CIRCUIT COURT
MARTIN COUNTY, FLORIDA

BY: _____
DEPUTY CLERK

FILE NO. _____

BASIS OF BEARINGS
BEARINGS SHOWN HEREON ARE REFERENCED TO U.S. HIGHWAY NO. 1 AS SHOWN ON RIGHT-OF-WAY MAP FOR SECTION NO. 8901-112 DATED 8-19-60.

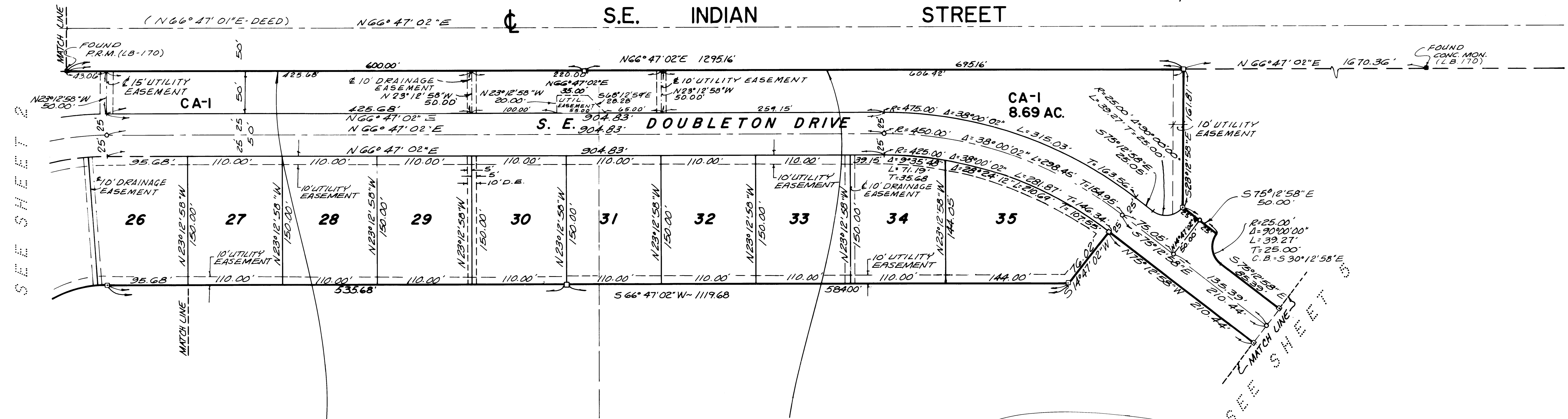
- LEGEND**
- INDICATES FOUND CONCRETE MONUMENT AS NOTED (PRM)
 - INDICATES FOUND IRON PIPE AS NOTED
 - INDICATES SET P.R.M. AS NOTED
 - CA INDICATES Common AREA PARCEL
 - INDICATES PERMANENT CONTROL POINT (PCP)
 - CAW INDICATES LAKE PARCEL



AUGUST 1988

Hutcheon Engineers
CIVIL ENGINEERS & SURVEYORS
11 East Osceola Street, Stuart, Florida 34994
BELLE GLADE WEST PALM BEACH STUART

SHEET 4 OF 5



SEE SHEET 2

SEE SHEET 5

JASPER PARK
PLAT BOOK 1, PAGE 67
(ABANDONED)
O.R. BOOK 778 PAGE 2246

(ABANDONED)
PORT SEWALL
PLAT BOOK 3, PAGE 7
PALM BEACH, (NOW MARTIN)
O.R. BOOK 778 PAGE 2246

- SURVEYOR'S NOTES**
- A. There shall be no building, any other kind of construction, or trees or shrubs placed on drainage easements.
 - B. There shall be no building or other permanent structures placed on utility easements.
 - C. There shall be no lot splits except to create larger lots.